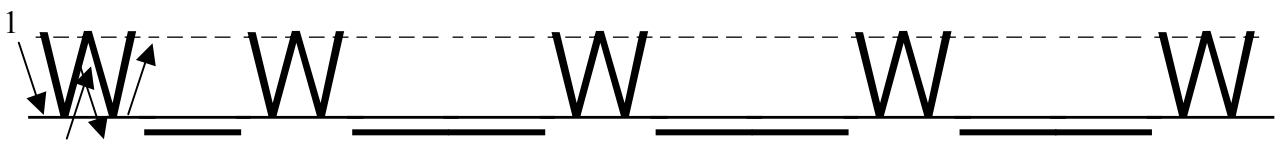
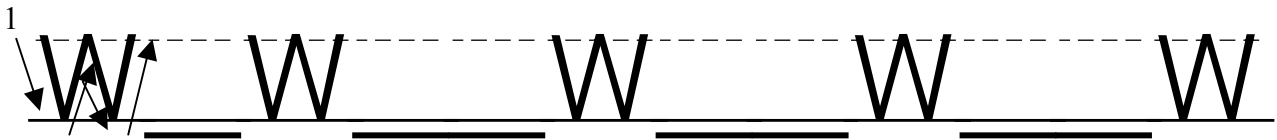
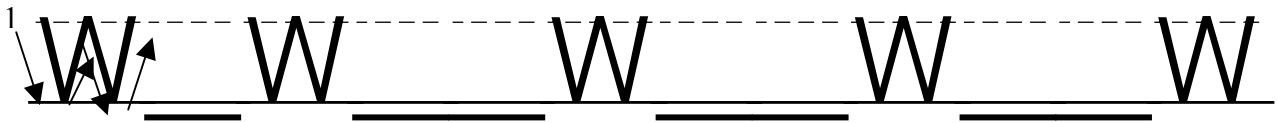
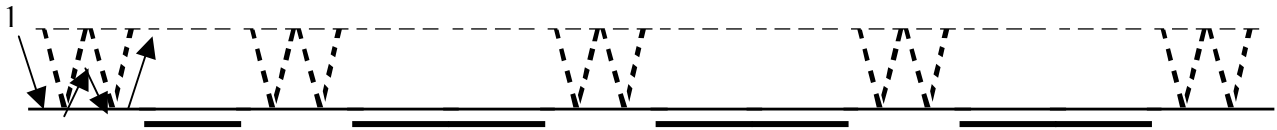


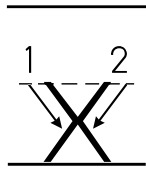
- Start at the middle line and make a sliding line down
- Then make a sliding line up to the middle line



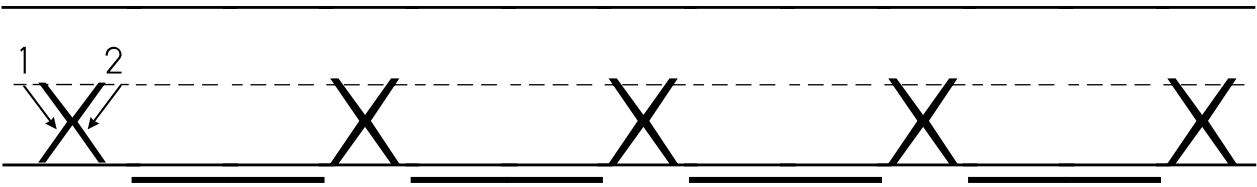
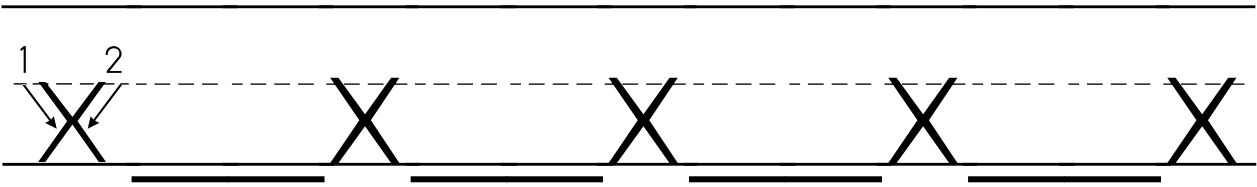
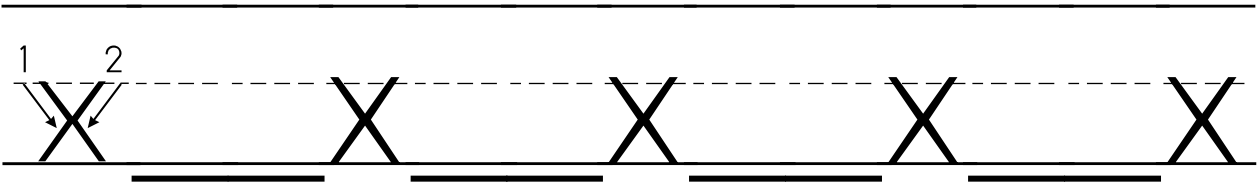
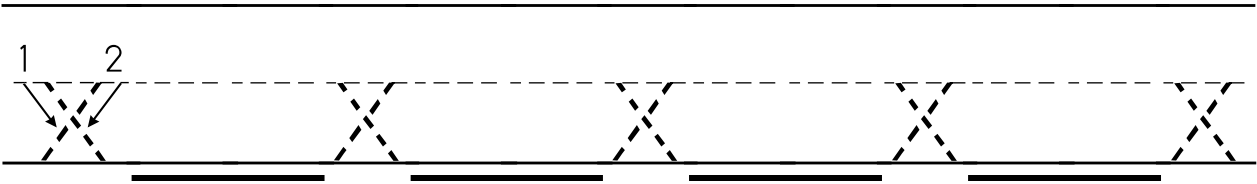


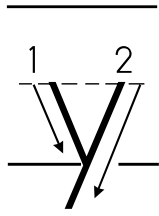
- Start at the middle line and make a sliding line down
- Make a sliding line up to the middle line
- Make another sliding line down
- Make another sliding line up to the middle line





- Start at the middle line and make a sliding line down
- Lift the pencil
- Start at the middle line and make a backward sliding line that crosses the middle of the first line





- Start at the middle line and make a sliding line down
- Lift the pencil
- Start at the middle line and make a backward sliding line that kisses the bottom of the first line then continues into the basement

